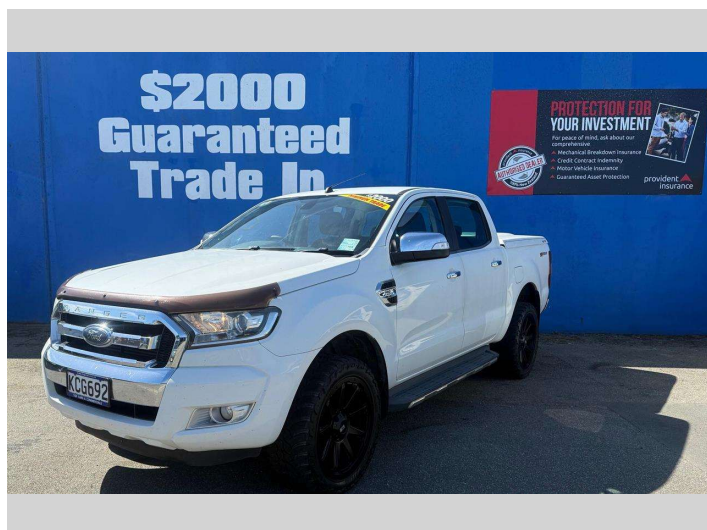


2016 Ford Ranger XLT DOUBLE CAB W/S A

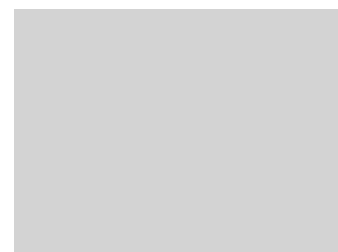
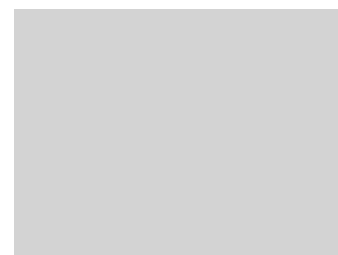
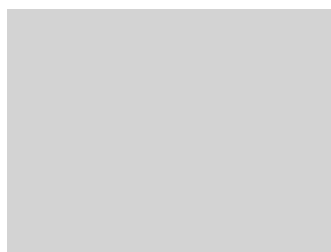
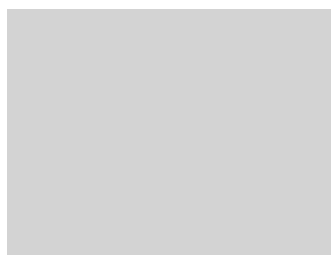


Purchase Price **\$26,999**
Includes GST, Registration & Licensing

Finance may be available on this vehicle. Ask one of our friendly staff for more information.

Gain peace of mind with Mechanical Breakdown Insurance. **Ask us how.**

- Top features**
- » ABS Brakes
 - » Air Conditioning
 - » Alloys
 - » Bluetooth
 - » Central Locking
 - » Central Locking
 - » EFI
 - » Electric Mirrors
 - » Hard Lid
 - » Parking sensors
 - » Remote Locking
 - » Reversing Camera
 - » Running Boards
 - » Tinted windows
 - » Tow Bar
 - » Tuff Deck



Body Style
4 door, Ute

Odometer
203,300 km

Engine
3198 cc, Internal Combustion

Fuel Type
Diesel

Transmission
Automatic, Rear Wheel

Wheels
Custom Alloys

VIN
MNAUMFF50GW598635

Interior
Black, Cloth

Safety



Based on 2025 VSRR rating

Reg No.
KCG692

Ext Colour
White

History
NZ New, 4 owners

Seats
5 seats, Cloth

CO2 Emissions
★ ★ ☆ ☆ ☆ ☆
257 grams/km

Energy Economy
★ ★ ☆ ☆ ☆ ☆
Annual fuel cost of \$3,780
9.7L per 100km

Cost per year is an estimate based on diesel price of \$2.00 per litre and an average distance of 14000 km. Includes Road User Charges (RUC). Emissions and Energy Economy figures standardised to 3P WLTP.

Stock ID: 4220



Top Cars & Commercials | Phone 03 214 1997 | Email john@topcars.co.nz
182 Clyde Street, Invercargill 9810, New Zealand
www.topcars.co.nz