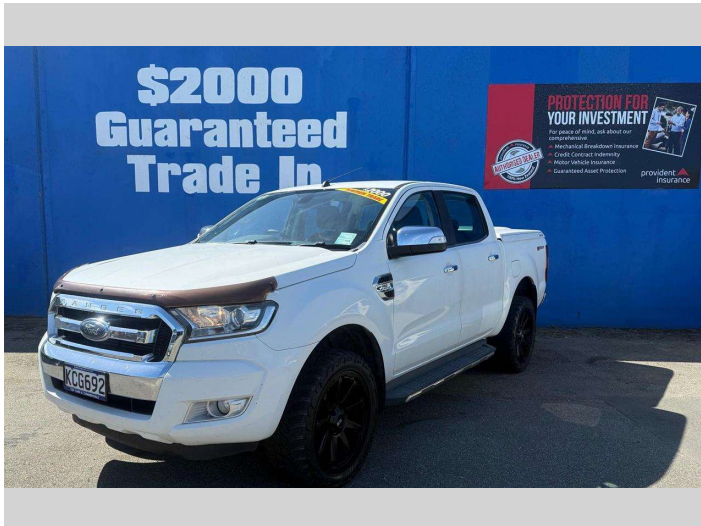


2016 Ford Ranger XLT DOUBLE CAB W/S A



Purchase Price

\$26,999

Includes GST, Registration & Licensing

Finance may be available on this vehicle. Ask one of our friendly staff for more information.

Gain peace of mind with Mechanical Breakdown Insurance. **Ask us how.**

Top features

- » ABS Brakes
- » Air Conditioning
- » Alloys
- » Bluetooth
- » Central Locking
- » Central Locking
- » EFI
- » Electric Mirrors
- » Hard Lid
- » Parking sensors
- » Remote Locking
- » Reversing Camera
- » Running Boards
- » Tinted windows
- » Tow Bar
- » Tuff Deck

Body Style

4 door, Ute

Odometer

203,300 km

Engine

3198 cc, Internal Combustion

Fuel Type

Diesel

Transmission

Automatic, Rear Wheel

Wheels

Custom Alloys

VIN

MNAUMFF50GW598635

Interior

Black, Cloth

Safety



Based on 2025 VSRR rating

Reg No.

KCG692

Ext Colour

White

History

NZ New, 4 owners

Seats

5 seats, Cloth

CO2 Emissions

★ ★ ☆ ☆ ☆ ☆

257 grams/km

Energy Economy

★ ★ ☆ ☆ ☆ ☆

**Annual fuel cost of \$3,780
9.7L per 100km**

Cost per year is an estimate based on diesel price of \$2.00 per litre and an average distance of 14000 km. Includes Road User Charges (RUC). Emissions and Energy Economy figures standardised to 3P WLTP.

Stock ID: 4220



Top Cars & Commercials | Phone 03 214 1997 | Email john@topcars.co.nz
182 Clyde Street, Invercargill 9810, New Zealand
www.topcars.co.nz